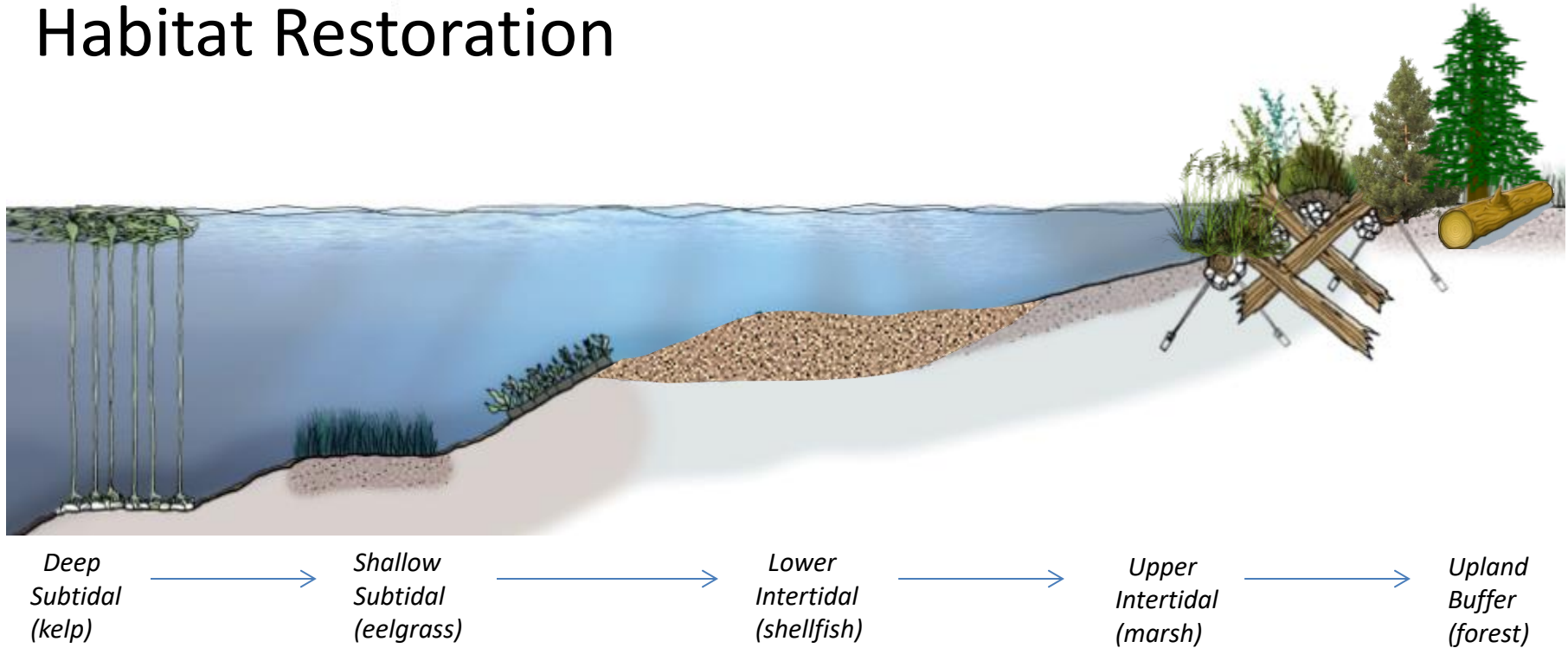


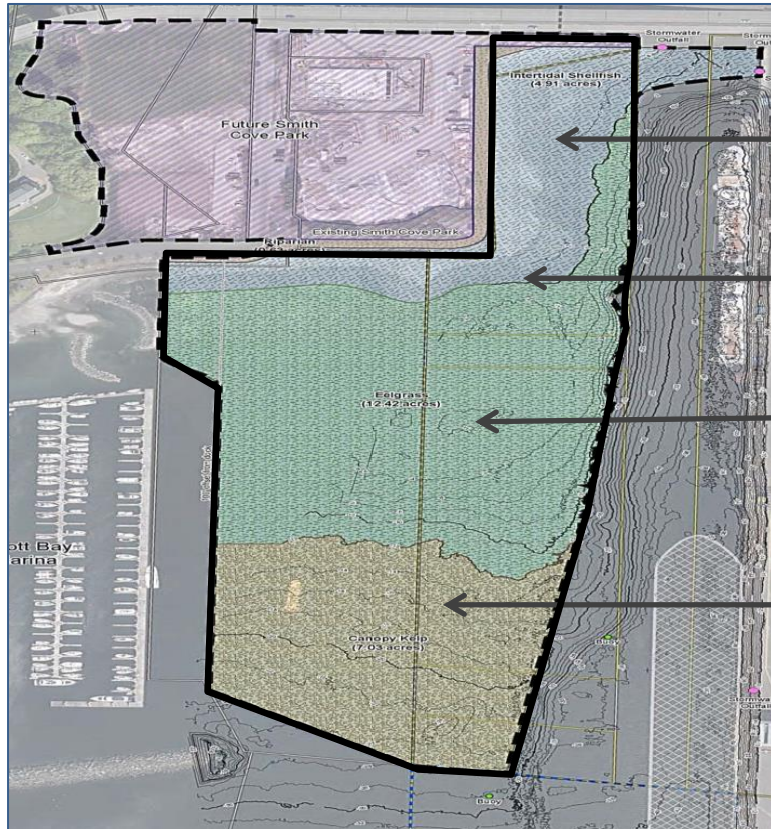
Smith Cove Blue Carbon Pilot Project: Monitoring Study Request



Port of Seattle Habitat Restoration



Project Site

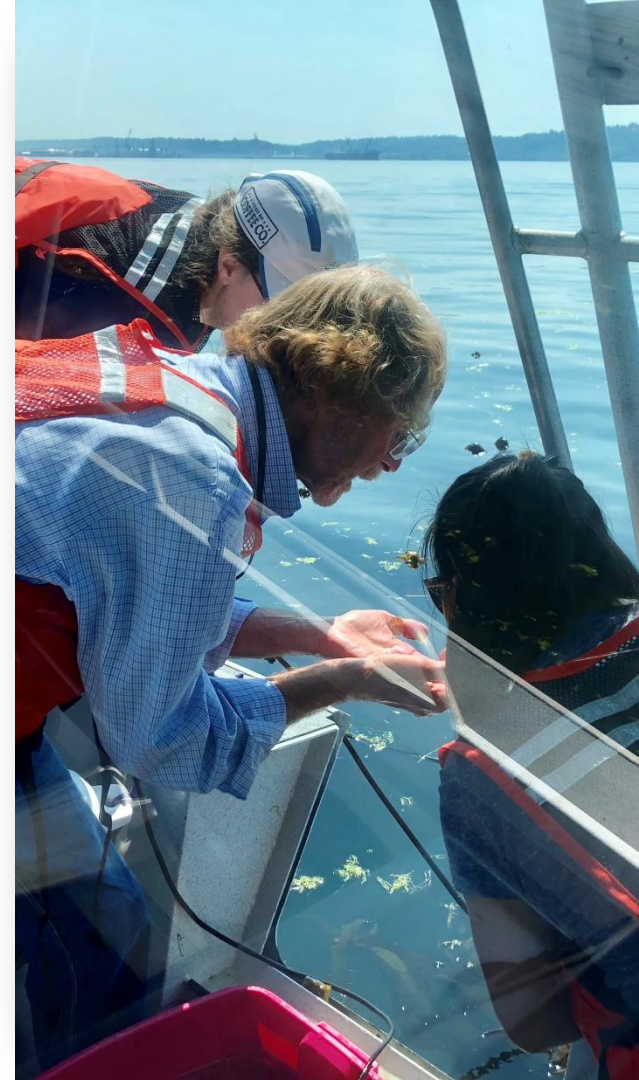


Oysters

Marsh plants

Eelgrass

Bull Kelp



Monitoring Study

- Collect baseline information
- Monitor project effects over time:
 - Biological productivity
 - Carbon sequestration
 - Water chemistry
- Analyze data
- Final report w/ recommendations



Milestones

Funded elements

- Install kelp, eelgrass, shellfish (2018-2019)
- Install interpretive signage (2020)

Current request

- Monitoring study (2019-2023)

Future elements

- Shoreline restoration w/ City of Seattle (2021)

